

K&F CA 1215-9

- 2-way full-range loudspeaker system loaded with 12" / 1.5"
- Very precise coverage in horizontal and vertical axes (90° x 50°), on a rotatable CD-Horn
- max. SPL 129 dB
- Multifunctional trapezoidal enclosure with 5 'allsafe JUNGFALK' flying points
- CA 1215-9 - M is useful as wedge monitor



The CA 1215-9 is a compact full-range, high-power loudspeaker system with 12" and 1.5" transducers. With a coverage of 90 x 50 degrees, this is the most universal tool in the K&F CA series. The wide horizontal coverage gives a complete acoustical saturation of the entire listening field especially in nearfield applications. Because of the good directivity it is also possible to get good results in less perfect rooms, the CA 1215-9 brings the sound where the user wants it. Even at distance the CA 1215-9 sounds very direct, also at very high sound pressure levels the sound is crystal clear and free of coloration.

The well-considered design of the CA 1215-9 enclosure and the variety of mounting hardware options, allow flexible usage, in various sound applications. With the 1.5" driver the CA 1215-9 has the best of both worlds: the fine resolution of a 1" driver and the pure power of 2" driver. A newly designed CD Horn provides consistent pattern control in both axes already from 1 kHz upwards. The highly efficient 12" loudspeaker in an optimum ported enclosure produces clear, bone dry lows with high sound pressure levels.

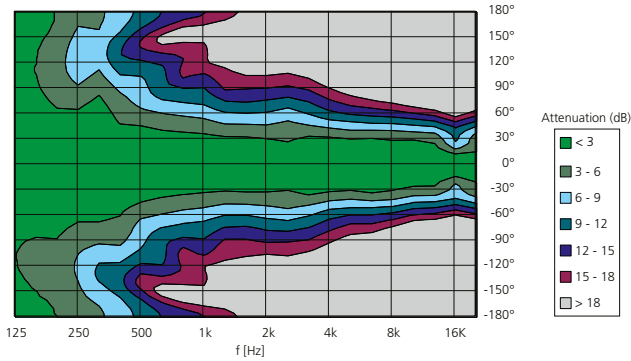
The total quality of a passive loudspeaker design, like the CA 1215-9, depends not only on the use of very high quality woofers and drivers, but a major part of the overall quality depends on the design of the crossover network. Apart from the exactly tuned compensation filters, we used for the first time a passive two step all-pass filter, to optimise the phase response and time alignment between the two transducers. The result is a hardly noticeable transition between the woofer and the horn driver, and a perfect "off axis" frequency response starting at 500 Hz. For extra safety there is a built-in limiter circuit for the 1.5" driver.

The CA 1215-9 can be used in horizontal and vertical plane. A revolving 90 x 50 degree flare gives the freedom to adjust the CA 1215-9 for the wanted coverage. The enclosure has a trapezoidal shape with two cluster angles, 5 signal stud rigging points and a internal pole mount. The CA 1215-9 - M version has one side with an angle of 48 degrees for use as a floor monitor.

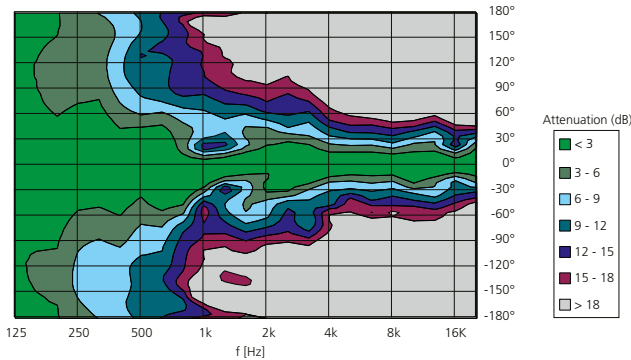
With the CA 1215-9 the most exacting user gets a excellent full-range system that combines the highest possible audio quality with impressive high sound pressure levels.

Loudspeaker	
Design	2-way passive system with bassreflex tuning
Operated with	K&F PLM+ Series, K&F D-Series, Lab. Gruppen IPD 2400, K&F SystemRack, K&F TOPAS, passive with linear amplifiers
Frequency range -10 dB	58 Hz – 22 kHz
Frequency range ±3 dB	80 Hz – 19 kHz
Coverage angles nominal	90° x 50° (hor. x vert.), CD-Horn rotatable
Power handling nominal	400 Watts
Power handling program	800 Watts
Power handling peak	1.600 Watts
Max. SPL	129 dB (SPL peak/1 m)
Impedance nominal	8 Ω
Loudspeaker per channel	see Matrix
Components	1" high frequency driver with 75 mm Titanium diaphragm automatic resetable driver protection, 12" low-mid chassis, 1.2 kHz 12 dB/octave, passive allpass filter to optimise phase and time alignment
Impedance (nominal)	8 Ω
Connectors	2 x speakON® 4-pol NL4MP (+1/-1), IN parallel zu OUT
Enclosure	
	Trapezoidal enclosure out of 15 mm multiplex with highly resistant structured paint (PU) in RAL 9005 (black), 2 ergonomic butterfly handles, internal pole mount, 5 flying point 'allsafe JUNGFALK', ball-proof steel grill with exchangeable black acoustic foam
Dimensions (W x H x D)	379 x 605 x 375 mm
Weight	31 kg
Colour	RLA 9005 (black)
Options	'M', 48° monitor wedge' (K&F CA 1215-9 - M), 'AS', axial symmetrical version, '100 V' version with 300 VA toroidal transformer (33.5 kg), 'barrier strip' instead of 'speakON®' connectors, 'Outdoor Mobile', 'Outdoor Installation', 'special finish in RAL colours'
Accessories	see Catalog or www.kling-freitag.com

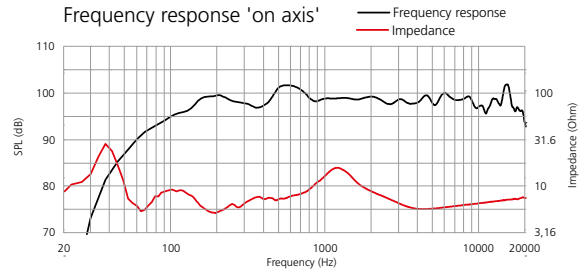
Horizontal coverage pattern



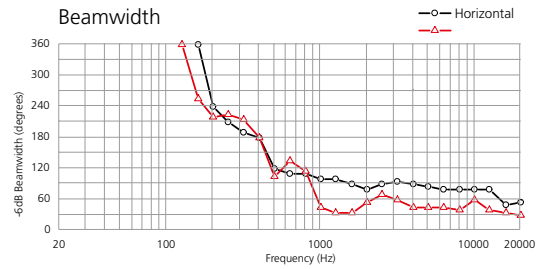
Vertical coverage pattern



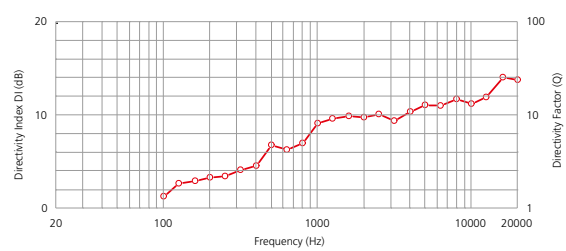
Frequency response 'on axis'



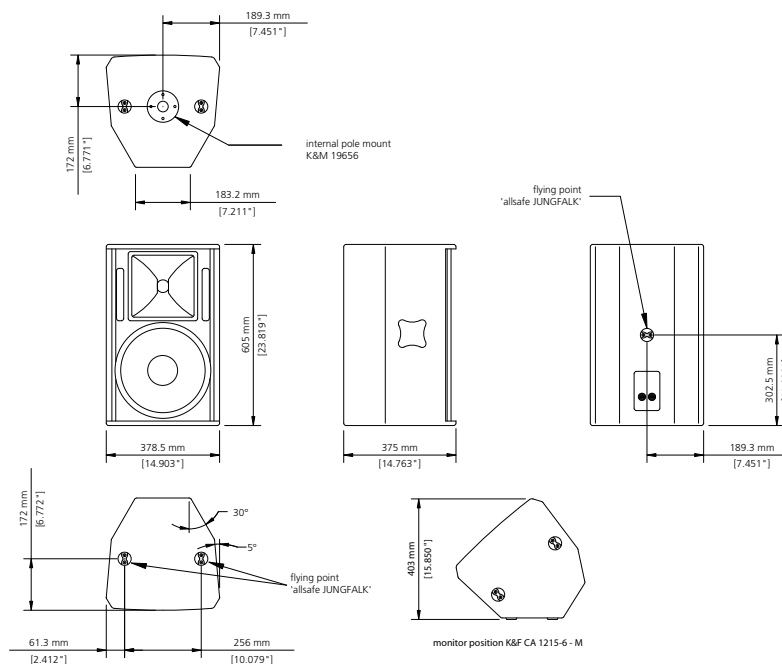
Beamwidth



Directivity



All measurements under free field conditions. Frequency patterns 1/6 octave averaged. Coverage and polar pattern 1/3 octave averaged. The manufacturer reserves the right to make product alterations to improve product quality without prior notice. Errors excepted.



Further information and data like specifications, manuals, technical drawings as DWG, DXF and PDF files as well as data files for acoustic simulations with Ease and Ulysses are available on our web site www.kling-freitag.com

KLING & FREITAG GmbH
Junkersstrasse 14
D-30179 Hannover
Tel. +49 (0)511 96 99 7-0
Fax +49 (0)511 67 37 94