

# K&F Line 212-6

- Compact, horn-loaded (2 x 12" / 1.5") full-range top class speaker
- Passive operations via integrated crossover with time alignment
- 65 x 50 degrees, rotatable high frequency horn
- FLC®-technology (frequency dependent line coupling / patent)
- SPL 137 dB peak
- Operations with the K&F SystemAmps
- Versatile use as single system and in arrays, applicable in combination with Line 212-9
- 'Click & Fly®', certified equipment for safe and fast set-up of horizontal and vertical clusters

The Line 212-6 has the patent FLC®-technology and along with the Line 212-9 (90 x 50 degrees), it establishes a new generation of high-power systems with wideband controlled sound distribution and minimal dimensions.

The FLC® developed by Kling & Freitag provides for distinctive homogenous directivity from the low-mid up through the high range. In doing so, two of the same speaker chassis are acoustically linked to become a column speaker (line) and are controlled in-phase using the FLC® electronics in frequency bands with different widths. With the frequency selective addition of both 12" cones, a highly efficient acoustically optimised speaker unit is created by the Line 212. This is especially noticeable in the reproduction of low frequencies and efficiency and homogeneity of the omnidirectional sound distribution.

The Line 212-6 is suitable as a passive full range speaker especially for mid-sized and larger distances and fully compatible with the sister model Line 212-9. The top quality of the materials and design provide for maximum flexibility of use of this system: as mobile p.a. system or fixed installation in theatres, arenas, or stadiums. Singular or combined in a cluster, horizontally or vertically placed on the stage, or flying; the multitude of possibilities is enormous. The certified and very easy to operate 'Click & Fly®' flying system makes a safe and quick set-up possible.

With 'Plug & Play', without any technical effort, the Line 212-6 achieves first-class acoustical results. The Line 212-6 is especially suited for use in a cluster and can even be combined with the Line 212-9. It is also superbly suited for decentralised systems, such as for electro-acoustical 'emergency warning systems' via audio matrix.

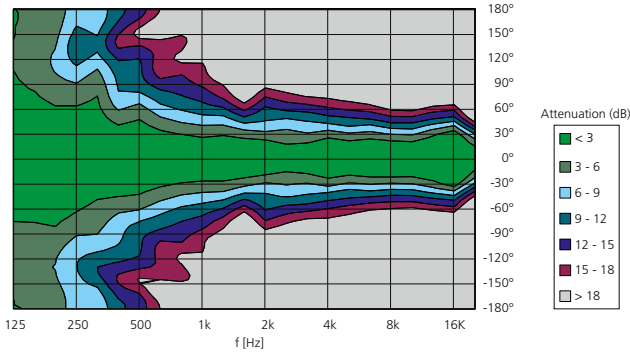
The use of the K&F SystemAmps guarantee optimal signal processing in the full-range mode

The Line 212 from Kling & Freitag is a standards in sound reinforcement technology because of the convincing advantages of the FLC®- and passive-technology, the full-range capabilities, and the resulting flexibility and performance.

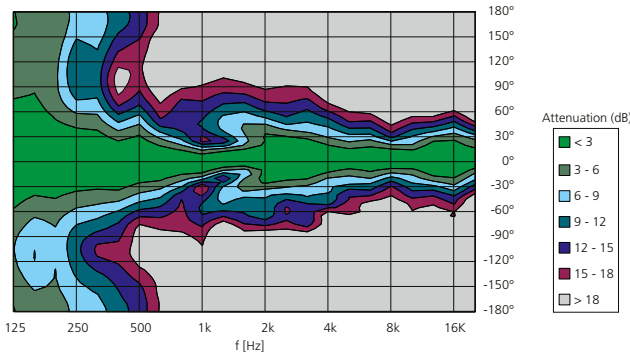


Loudspeaker	
Design	2 + 1-way passiv system with FLC®-technology, completley horn loaded, bassreflex tuning
Operation with	K&F PLM+ Series, K&F D-Series, K&F SystemRack, K&F TOPAS
Frequency range -10 dB	49 Hz – 20 kHz (FR mode) (65 Hz – 20 kHz without Controller)
Frequency range ±3 dB	60 Hz – 18 kHz (FR mode) (130 Hz – 20 kHz ohne Controller)
Coverage angles nominal	65° x 50° (hor. x vert.), horn rotatable
Power handling nominal	600 watts
Power handling program	1.200 watts
Power handling peak	2.400 watts
Max. SPL	137 dB (SPL peak/1 m)
Impedance (nominal)	6 Ω
Loudspeaker per channel	see Matrix
Components	1.5" high frequency driver with 75 mm Titanium diaphragm 1 x 12" low-mid chassi and 1 x 12" low chassi, booth with horn attachment, 2+1-way crossover in FLC®-technology (patent) with time and phase alignment
Connectors	2 x speakON® 4-pol NL4MP (+1/-1), IN parallel to OUT
Enclosure	
	Trapezoidal enclosure out of 15 mm multiplex with highly resistable structured paint (PU) in RAL 9005 (black), 2 butterfly handles, 4 non-abrasive plastic sliders, 4 stacking grooves for identical enclosures, 4 flying points 'allsafe JUNGFALK' 1 rear mounted flying track 'allsafe JUNGFALK', 2 locking profiles for optional transport cover with castors, ball-proof steel grill with exchangeable acoustic foam (black) in front of the grille
Weight	57.5 kg
Colour	RAL 9005 (black)
Dimensions (W x H x D)	429 x 1025 x 510 mm
Options	'barrier strip' instead of speakon connectors, 'Outdoor Mobile', 'Outdoor Installation', 'special finish in RAL colours'
Accessories	see Catalog or <a href="http://www.kling-freitag.de">www.kling-freitag.de</a>

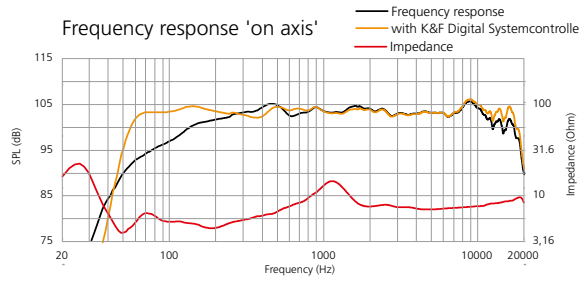
Horizontal coverage pattern



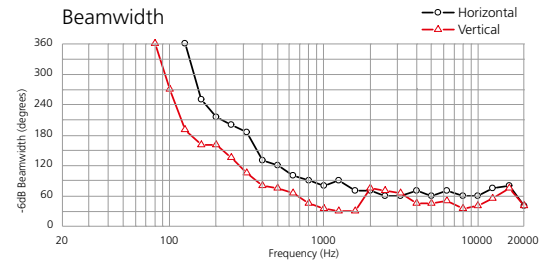
Vertical coverage pattern



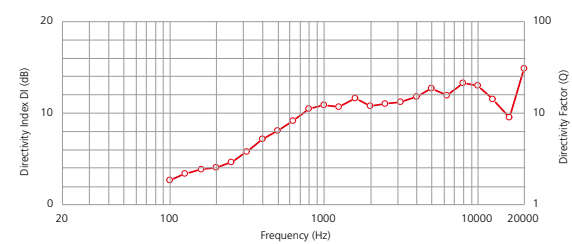
Frequency response 'on axis'



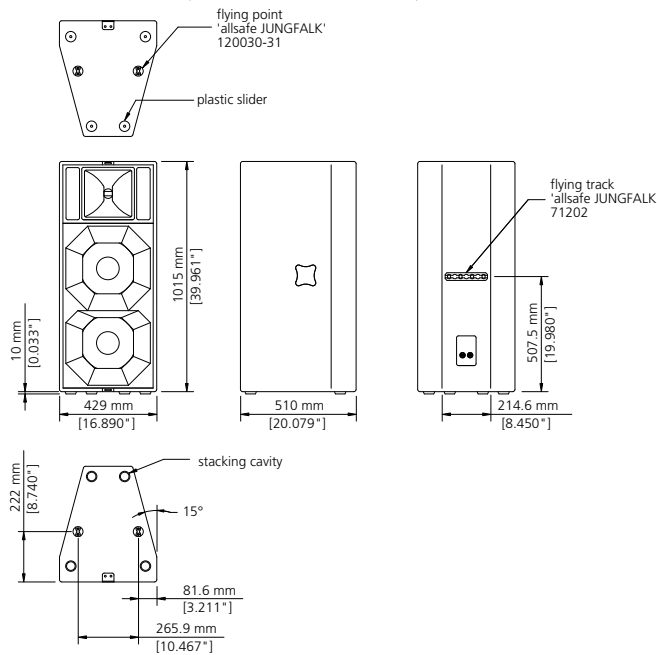
Beamwidth



Directivity



All measurements under free field conditions. Frequency patterns 1/6 octave averaged. Coverage and polar pattern 1/3 octave averaged. The manufacturer reserves the right to make product alterations to improve product quality without prior notice. Errors excepted.



Further information and data like specifications, manuals, technical drawings as DWG, DXF and PDF files as well as data files for acoustic simulations with Ease and Ulysses are available on our web site [www.kling-freitag.de](http://www.kling-freitag.de)

**KLING & FREITAG GmbH**  
Junkersstrasse 14  
D-30179 Hannover  
Tel. +49 (0)511 96 99 7-0  
Fax +49 (0)511 67 37 94