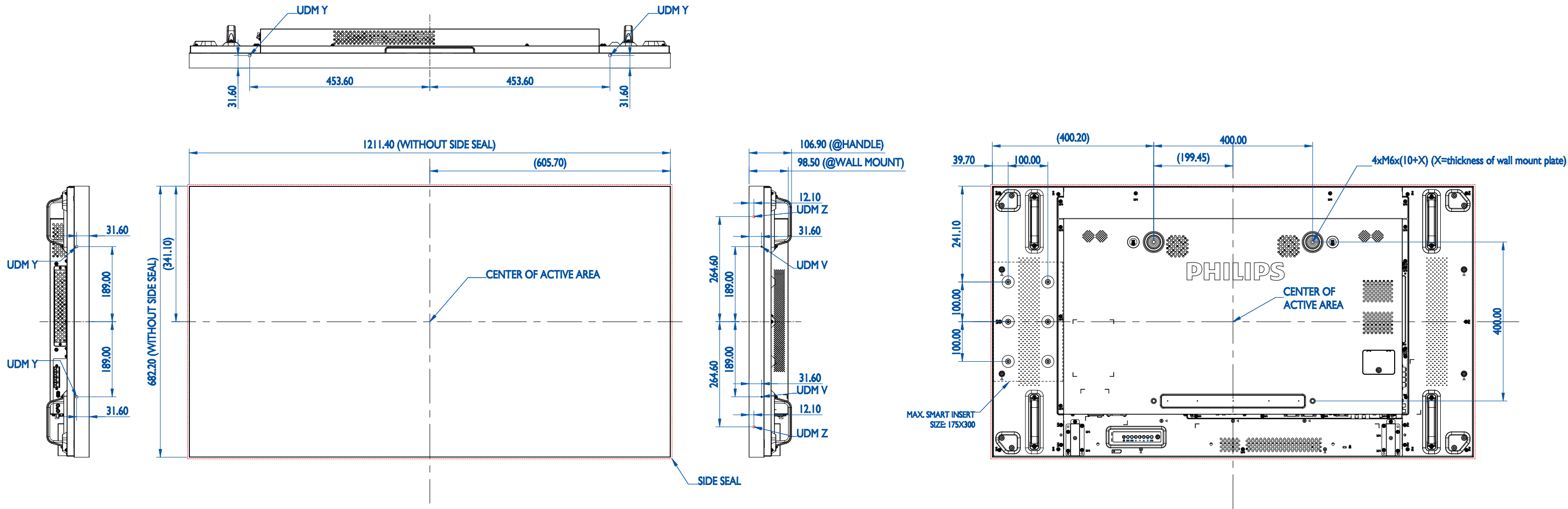


Philips 55BDL1005X, 55BDL1007X

Version: 1.1

Release Date: 2016/11/18



REMARK:

1. A TO A DISTANCE: 1.8MM
2. B TO B DISTANCE: 1.6MM (REFERENCE ONLY)
3. UDM Y, UDM V USER HOLES:
 - (1) FOR M3 SCREW
 - (2) MAX. DEPTH: 4.0MM
 - (3) MAX. TORQUE: 4.0 kgf.cm
4. UDM Z USER HOLES:
 - (1) $\phi 6$ HOLE
 - (2) MAX. DEPTH: 5.0MM
5. SMART INSERT:
 - (1) PITCH: 100MM
 - (2) FOR M4xL6 SCREWS
 - (3) MAX. SIZE: 175(H)x300(V)